
Curtain Transvectors

Contents

1	Curtain Transvectors	2
1.1	Overview	2
1.2	Features	2
1.3	Benefits	2
1.4	Applications	3
1.5	Uses	3
2	Models	4
2.1	Air Knife (aluminum body)	4
2.2	Air Knife (stainless steel body)	7
3	Technical data	9

1 Curtain Transvectors

Air Knives Deliver Flat Sheet of Amplified Air

1.1 Overview

Curtain Transvector Air Knives are air amplifiers, using a small amount of filtered compressed air to deliver a powerful, high velocity, laminar sheet of air over wide areas such as moving webs, film, sheets, strips, auto bodies and other large assemblies and objects. They are an excellent solution for high speed drying of wide surfaces, as well as industrial cooling. Vortec's patented design produces increased thrust and velocity, reduced noise and excellent uniformity.



1.2 Features

- 25 times air amplification over compressed air input
- High performance, patented design gives high thrust
- Interchangeable shims enable air flow to be adjusted for the specific application
- Single compressed air inlet up to 12 inch length; dual inlet on longer models
- Instant on/off
- No moving parts; no maintenance
- Quiet - meets OSHA noise specifications

1.3 Benefits

- More uniform blow off of large surfaces than nozzles or jets
- Dries surfaces quickly and thoroughly

- Costs significantly less than fans or blowers
- Inherently safe, with no guards or rotating equipment
- Reduced compressed air usage, versus open nozzles
- Easily controlled output
- Quiet - meets OSHA requirements
- No electrical connections at the target site
- Easily mounted and moved
- Give a cleaner surface for painting or coating
- Easily adjustable

1.4 Applications

Curtain Transvector Air Knives deliver a flat sheet of amplified air designed to efficiently blow off water and debris from wide surfaces and provide high speed drying or cooling.

Stainless steel Air Knives are available for pharmaceutical and chemical applications, and for high temperature or chemically corrosive environments.

1.5 Uses

- Blow off of wood, laminates, metal sheets, moving webs, sheets, autobodies and large objects
- Surface cooling of metal, electronics, etc.
- Shrink wrapping
- Food processing
- Cooling molded parts and castings
- Weigh sorting of pharmaceuticals and other lightweight items
- Drying printing inks
- Creating air curtains
- Containment of fumes

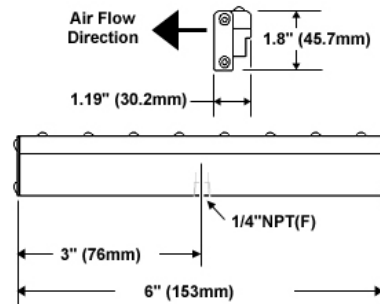
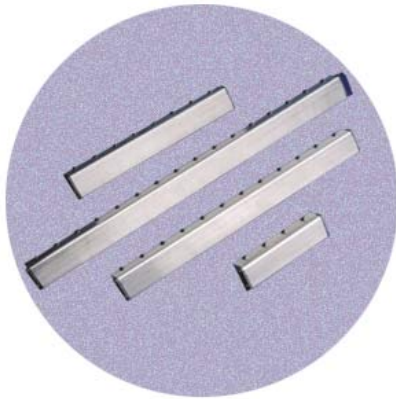
2 Models

2.1 Air Knife (aluminum body)

Curtain Transvectors use a small amount of filtered compressed air to produce a powerful, high velocity, uniform air flow

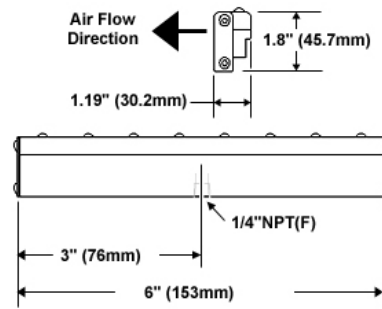
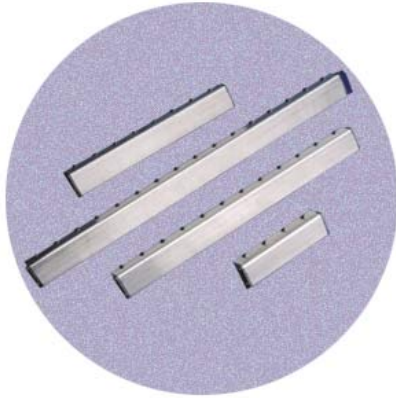
921-3: Curtain Transvector (76 mm)

Model	921-3
Material of Construction	Aluminium
Length, mm	76
Ionizing	No
Number of Air Inlets	1

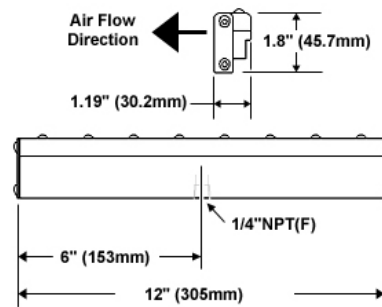
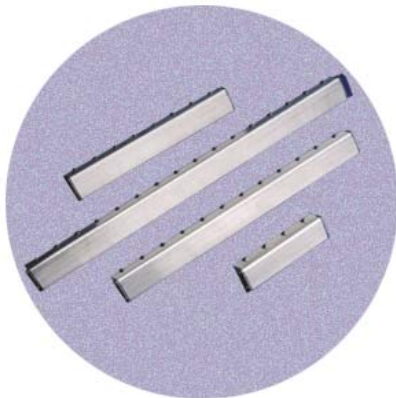


921-6: Curtain Transvector (152 mm)

Model	921-6
Material of Construction	Aluminium
Length, mm	152
Ionizing	No
Number of Air Inlets	1

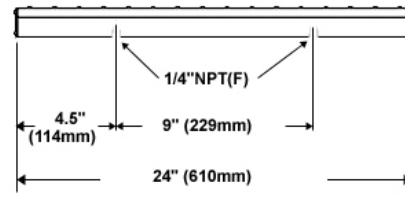
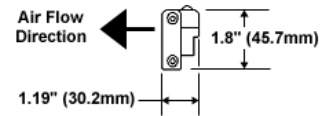
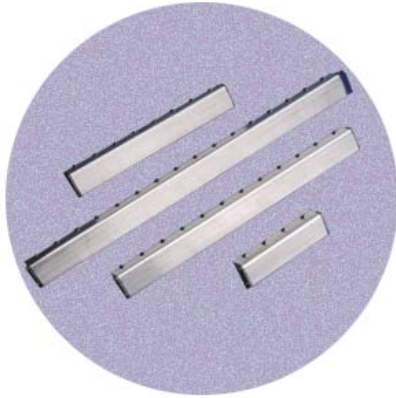
**921-12: Curtain Transvector (305 mm)**

Model	921-12
Material of Construction	Aluminium
Length, mm	305
Ionizing	No
Number of Air Inlets	1

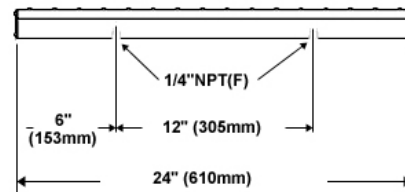
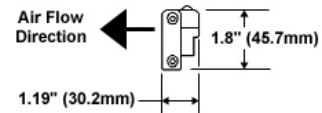
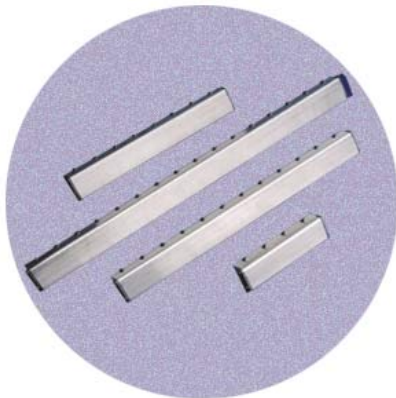


921-18: Curtain Transvector (457 mm)

Model	921-18
Material of Construction	Aluminium
Length, mm	457
Ionizing	No
Number of Air Inlets	2

**921-24: Curtain Transvector (610 mm)**

Model	921-24
Material of Construction	Aluminium
Length, mm	610
Ionizing	No
Number of Air Inlets	2

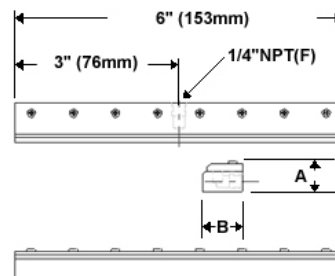
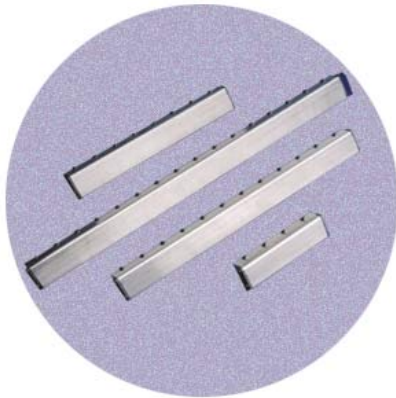


2.2 Air Knife (stainless steel body)

Curtain Transvectors produce a powerful sheet of air for use in applications where high temperatures, purity or corrosion resistance is a concern

921SS: Stainless Steel Curtain Transvector (152 mm)

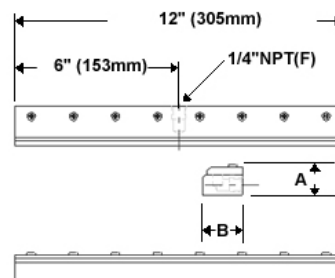
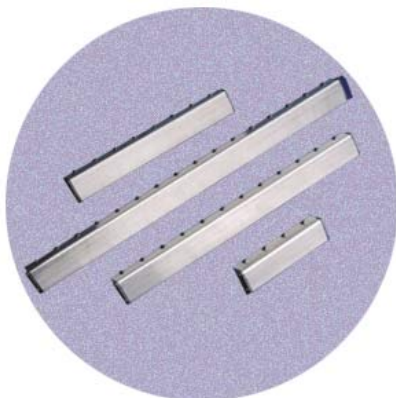
Model	921SS
Material of Construction	Stainless Steel
Length, mm	152
Ionizing	No
Number of Air Inlets	1



A = 1-3/32" (28mm)
B = 1-1/2" (38mm)

922SS: Stainless Steel Curtain Transvector (305 mm)

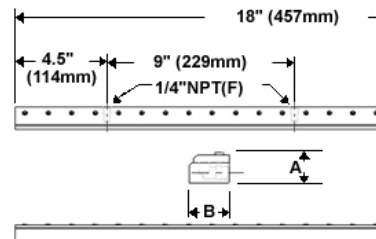
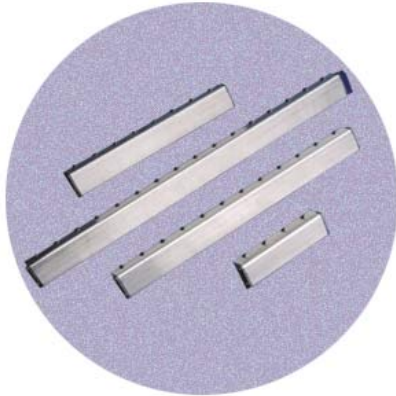
Model	922SS
Material of Construction	Stainless Steel
Length, mm	305
Ionizing	No
Number of Air Inlets	1



A = 1-3/32" (28mm)
B = 1-1/2" (38mm)

923SS: Stainless Steel Curtain Transvector (457 mm)

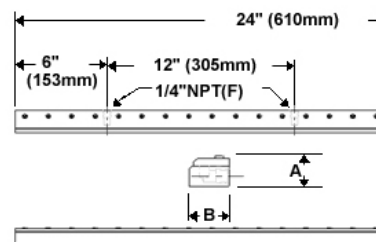
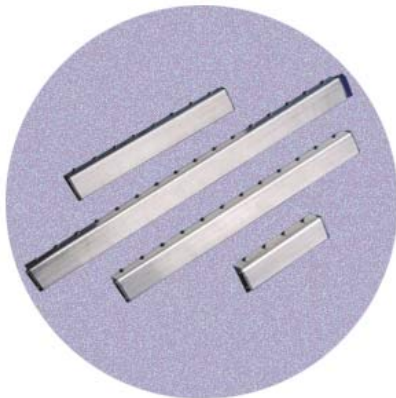
Model	923SS
Material of Construction	Stainless Steel
Length, mm	457
Ionizing	No
Number of Air Inlets	2



A = 1-3/32" (28mm)
B = 1-1/2" (38mm)

924SS: Stainless Steel Curtain Transvector (610 mm)

Model	924SS
Material of Construction	Stainless Steel
Length, mm	610
Ionizing	No
Number of Air Inlets	2



A = 1-3/32" (28mm)
B = 1-1/2" (38mm)

3 Technical data

Air Knife (aluminum body)

Model	Material of Construction	Length, mm	Ionizing	Number of Air Inlets
921-3	Aluminium	76	No	1
921-6	Aluminium	152	No	1
921-12	Aluminium	305	No	1
921-18	Aluminium	457	No	2
921-24	Aluminium	610	No	2

Air Knife (stainless steel body)

Model	Material of Construction	Length, mm	Ionizing	Number of Air Inlets
921SS	Stainless Steel	152	No	1
922SS	Stainless Steel	305	No	1
923SS	Stainless Steel	457	No	2
924SS	Stainless Steel	610	No	2